

Jewelry **J** Innovations®

CATALOG VOL. 34

SOLE SOURCE OF



SERINIUM®

THE PRECIOUS CONTEMPORARY METAL®

U.S. Patent No. 9,289,037



- TABLE OF CONTENTS -

Barrel Aged™4	Cultural Heritage™19	First Responder.....30	Know Your Contemporary Metals.....50
Western Heritage™8	Precious Metal Inlays.....20	Camo31	Ring Shapes, Styles, & Sizing52
The Serinium® Story10	Laser Engraved22	Serinium®32	Ring Finishes53
National Pastime™12	Carbon Fiber26	Black Diamond Ceramic™38	Warranty & How To Order54
Hidden Gold™14	Exotic Hardwood27	Rugged Tungsten™42	Customer Reviews55
Craftsman™16	Diamonds28	TrūBand Silicone™46	
Royal Copper™18	Customization.....29	Aerospace Grade Titanium™48	

THE JEWELRY INNOVATIONS 2023 COLLECTIONS

The warm glow of aged whiskey in a crystal tumbler, the cry of wild horses as they race across the chaparral, or the crack of the bat as horsehide meets hickory on a summer afternoon. Our newest collections capture the romance and nostalgia of these classic American scenes.

In this catalog, you will see the Barrel Aged Collection™ of rings inlaid with genuine oak aging barrels, the Western Heritage Collection™ featuring the iconic designs and minerals of the American West, and the National Pastime Collection™ of rings featuring designs and inlays from the golden years of baseball.

We specialize in men's rings made from contemporary fine jewelry metals, including Serinium®, the precious contemporary metal, Rugged Tungsten™, and Black Diamond Ceramic™.

Many more collections are featured, including hand carved and shaped bands and hundreds of custom laser engravings, but only a small fraction of our thousands of styles are shown in these pages. Please see our website, jewelryinnovations.com, or phone us and let us know what you need. We are proud to offer our industry leading quality and customer service to authorized jewelry retailers throughout North America.

Thank you for letting us serve you since 1989.

Jewelry  Innovations®

BARREL

AGED™

COLLECTION

RMSA007408
Bourbon & Antler Inlay
Flat | Sandblast Finish



RMCA006611
Single Malt Inlay
Flat | Notched Edge Finish



RMCA006584
Cabernet & Turquoise Inlay
Flat | Polish Finish



The best selling Barrel Aged™ Collection features solid wood inlays from authentic whiskey, wine, and cognac barrels. Hand crafted by our skilled jewelers, these beautiful bands can be customized for your clientele, even inlaid with barrel wood from specific brands of whiskey upon request.

Choose from Serinium®, Rugged Tungsten™, and Black Diamond Ceramic™ in dozens of styles and variations.



RMCA006582
Black Diamond Ceramic™ | 8mm
2mm Bourbon Inlay
Beveled | Grain Finish



RMSA006581
Serinium® | 8mm
3mm Bourbon Inlay
Flat | Moon Finish



RMWA006722
Rugged Tungsten™ | 8mm
1mm Antler, 2mm Bourbon Inlay
Flat | Polish Finish



RMSA006772
Serinium® | 8mm
5mm Bourbon Inlay
Flat | Stone Finish



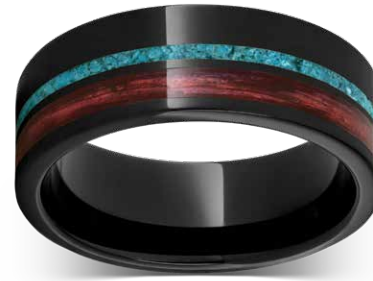
RMSA007091
Serinium® | 8mm
1mm Turquoise, 2mm Bourbon Inlay,
Feather Engraving | Flat | Polish Finish



RMCA006907
Black Diamond Ceramic™ | 8mm
(2) 2mm Cabernet Inlays
Domed | Polish Finish



RMSA006582
Serinium® | 8mm
2mm Bourbon Inlay
Beveled | Grain Finish



RMCA006584
Black Diamond Ceramic™ | 8mm
1mm Turquoise, 2mm Cabernet Inlay
Flat | Polish Finish



RMSA006577
Serinium® | 8mm
3mm Bourbon Inlay
Flat | Bark Finish



RMWA006581
Rugged Tungsten™ | 8mm
3mm Bourbon Inlay
Flat | Moon Finish



RMCA007224
Black Diamond Ceramic™ | 8mm
2mm Antler, 2mm Bourbon Inlay
Domed | Polish Finish



RMSA006722
Serinium® | 8mm
1mm Antler, 2mm Bourbon Inlay
Flat | Polish Finish



RMCA006772
Black Diamond Ceramic™ | 8mm
5mm Bourbon Inlay
Flat | Stone Finish



RMCA006877
Black Diamond Ceramic™ | 8mm
5mm Single Malt Inlay
Flat | Scored Edge Finish



RMWA006577
Rugged Tungsten™ | 8mm
3mm Bourbon Inlay
Flat | Bark Finish



RMCA006578
Black Diamond Ceramic™ | 8mm
2mm Cabernet Inlay
Beveled | Grain Finish



RMCA006589
Black Diamond Ceramic™ | 8mm
2mm Chardonnay Inlay
Beveled | Grain Finish



RMSA006578
Serinium® | 8mm
2mm Cabernet Inlay
Beveled | Grain Finish



RMCA007115
Black Diamond Ceramic™ | 8mm
5mm Rye Whiskey Inlay
Flat | Stone Finish



RMSA006583
Serinium® | 8mm
1mm Turquoise, 2mm Bourbon Inlay
Flat | Polish Finish

BARREL AGED™



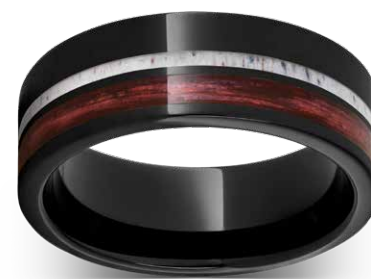
RMSA006928
Serinium® | 8mm
5mm Rye Whiskey Inlay
Flat | Notched Edge Finish



RMCA006590
Black Diamond Ceramic™ | 8mm
2mm Single Malt Inlay
Beveled | Grain Finish



RMSA006960
Serinium® | 8mm
3mm Rye Whiskey Inlay
Flat | Stone Finish



RMCA006721
Black Diamond Ceramic™ | 8mm
1mm Antler, 2mm Cabernet Inlay
Flat | Polish Finish



RMCA006906
Black Diamond Ceramic™ | 8mm
(2) 2mm Bourbon Inlays
Domed | Polish Finish



RMSA006774
Serinium® | 8mm
5mm Single Malt Inlay
Flat | Stone Finish



RMCA006682
Black Diamond Ceramic™ | 8mm
4mm Bourbon Inlay
Beveled | Grain Finish



RMWA006582
Rugged Tungsten™ | 8mm
2mm Bourbon Inlay
Beveled | Grain Finish

WESTERN HERITAGE COLLECTION™



The Western Heritage Collection™ features iconic designs, stones and metals native to the American West. Hundreds of styles are available, with inlays of semi-precious stones and precious metals, and engraved western themes and designs.

Inlays include 14k gold, sterling silver, turquoise, lapis, opal, antler, and many others.

All Western Heritage rings are available in Serinium®, Black Diamond Ceramic™, and Rugged Tungsten™.



RMSA006027
Serinium® | 8mm
Mountain Pine Engraving
Flat



RMSA007091
Serinium® | 8mm
1mm Turquoise, 2mm Bourbon Inlay
Feather Engraving | Flat | Polish Finish



RMWA007400
Rugged Tungsten™ | 8mm
Forest Engraving
Flat | Satin Finish



RMSA007430
Serinium® | 8mm
3mm Lapis Inlay
Flat | Half Bark Finish



RMCA007076
Black Diamond Ceramic™ | 8mm
2mm Turquoise Inlay, Feather Engraving
Beveled | Polish Finish



RMSA007088
Serinium® | 8mm
2mm Lapis Inlay
Beveled | Grain Finish



RMCA007375
Black Diamond Ceramic™ | 8mm
2mm Coral Inlay
Flat | Stone Finish



RMWA007085
Rugged Tungsten™ | 8mm
3mm Antler Inlay
Flat | Bark Finish



RMSA007103
Serinium® | 8mm
3mm Opal Inlay, Feather Engraving
Flat | Polish Finish



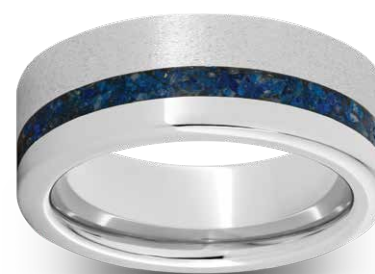
RMWA007087
Rugged Tungsten™ | 8mm
3mm Malachite Inlay
Flat | Bark Finish



RMSA006949
Serinium® | 8mm
Latigo Floral Engraving
Flat | Rope Edge Finish



RMCA007082
Black Diamond Ceramic™ | 8mm
2mm Turquoise Inlay
Beveled | Grain Finish



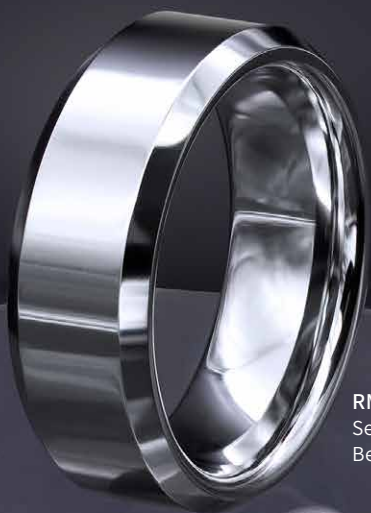
RMSA007108
Serinium® | 8mm
2mm Lapis Inlay
Flat | Half Stone Finish



SERINIUM®

The Precious Contemporary Metal®

View
Serinium®
collection
on page
32.



RMSA002057
Serinium® | 8mm
Beveled | Polish Finish

Revolutionizing Contemporary Metal

In the late 1990s, we had an idea for something completely new to the jewelry industry. We wanted to develop what we called *the perfect contemporary jewelry metal*. Despite the popularity of metals such as tungsten carbide, titanium, and cobalt chromium, there were significant downsides to all of them and major safety concerns. Donny McIllece, our VP of Product Development, thought we could do better.

After years of development in numerous labs, in 2011 Jewelry Innovations filed its patent application for the fine jewelry metal that would come to be called Serinium®. Serinium combines the best

properties of existing metals without any of the drawbacks. It is extremely hard and wear resistant like tungsten carbide, but not as brittle. It has a beautiful white color like cobalt and will not oxidize, tarnish, or change color over time.

Unlike cobalt and titanium, Serinium will not crush onto a finger and can quickly and safely be removed in an emergency. This hypoallergenic metal can also stand extremes of heat and impact without damage.

For all of these reasons, we call Serinium “The Precious Contemporary Metal”. All of our collections, including those in this catalog such as Barrel Aged, National Pastime and Western Heritage, and all of our laser engravings, are available in this finest of all contemporary jewelry metals.



“

Its hard to not recommend a business that treats you like family. Thank you for taking care of me and making my wedding band better than I could have imagined. Serinium is the real deal and I couldn't be happier!!! Thank you!!!

Michael Dame | Google Review, 2020



RMSA006027
Serinium® | 8mm
Mountain Pine Engraving
Flat



RMSA006366
Serinium® | 8mm
Flat | Thor Finish



RMSA001802
Serinium® | 6mm
Beveled | Satin Finish



RMSA002066
Serinium® | 8mm
2mm 14K Rose Gold Inlay
Beveled | Satin Finish



RMSA006961
Serinium® | 8mm
10K Yellow Gold Interior, Viking Engraving
Beveled | Polish Finish



RMSA002198
Serinium® | 8mm
Black Ceramic Inlay
Domed | Polish Finish



RMSA006981
Serinium® | 8mm
Latigo Floral Engraving
Flat Grooved Edge | Polish Finish



RMSA007107
Serinium® | 8mm
2mm Opal Inlay
Beveled | Satin Finish



RMSA006577
Serinium® | 8mm
3mm Bourbon Aged Barrel Wood Inlay
Flat | Bark Finish



RMSA002464
Serinium® | 8mm
Flat Grooved Edge | Sandblast Finish



★ COLLECTION ★



Jewelry Innovations is proud to announce the National Pastime Collection™ of rings inlaid with wood from genuine vintage baseball bats. Choose from Hickory, White Ash, and Maple bats in hundreds of styles and finishes.

Hand crafted by our skilled jewelers, National Pastime Collection rings are available in Serinium®, Black Diamond Ceramic™, or Rugged Tungsten™ and can be made with custom bat woods by request.



RMCA007443
Black Diamond Ceramic™ | 8mm
2mm Ash, 2mm Hickory Inlay
Domed | Polish Finish

**RMSA007433**

Serinium® | 8mm
3mm Ash Inlay
Flat | Bark Finish

**RMCA007432**

Black Diamond Ceramic™ | 8mm
1mm Turquoise, 2mm Ash Inlay
Flat | Polish Finish

**RMWA007435**

Rugged Tungsten™ | 8mm
5mm Ash Inlay
Flat | Stone Finish

**RMCA007437**

Black Diamond Ceramic™ | 8mm
2mm Ash Inlay
Beveled | Grain Finish

**RMSA007474**

Serinium® | 8mm
4mm Maple Inlay
Beveled | Polish Finish

**RMSA002263**

Serinium® | 8mm
Baseball Engraving
Domed | Polish Finish

**RMCA007466**

Black Diamond Ceramic™ | 8mm
Baseball Engraving
Domed | Stone Finish

**RMSA007477**

Serinium® | 8mm
4mm Maple Inlay
Domed | Polish Finish

**RMWA007434**

Rugged Tungsten™ | 8mm
3mm Hickory Inlay
Flat | Bark Finish

**RMCA007436**

Black Diamond Ceramic™ | 8mm
5mm Hickory Inlay
Flat | Stone Finish

**RMSA007436**

Serinium® | 8mm
5mm Hickory Inlay
Flat | Stone Finish

**RMCA007438**

Black Diamond Ceramic™ | 8mm
2mm Hickory Inlay
Beveled | Grain Finish

HIDDEN GOLD™ COLLECTION

RMSA006963
Serinium® | 8mm
10K Yellow Gold Interior
Beveled | Satin Finish



RMCA007002
Black Diamond Ceramic™ | 6mm
10K Rose Gold Interior
Beveled | Satin Finish



The Hidden Gold™ Collection features contemporary metal rings inset with solid 10k yellow and rose gold interiors, achieving beauty and durability that plated rings cannot match.

These solid gold inlays are available in multiple shapes, finishes, widths, and the full range of our unique laser engraved designs.

“

The crew at JI delivered WELL ahead of expectations! We placed a couple orders with them the week before Christmas and weren't expecting them until the second week of January. Both came in already! Both got picked up by the customer already! And both customers were surprised! Thanks again! You guys rock!! Under promise, over deliver, and sleep easier at night!

Ben Waddington |
Waddington Jewelers, 12.29.2022



RMSA006964
Serinium® | 8mm
10K Rose Gold Interior
Beveled | Satin Finish



RMSA007109
Serinium® | 8mm
10K Yellow Gold Interior, Latigo Engraving
Rounded Edge | Rope Edge Finish



RMCA007002
Black Diamond Ceramic™ | 6mm
10K Rose Gold Interior
Beveled | Satin Finish



RMCA007001
Black Diamond Ceramic™ | 6mm
10K Yellow Gold Interior
Beveled | Satin Finish



RMCA006993
Black Diamond Ceramic™ | 8mm
10K Yellow Gold Interior, Viking Engraving
Beveled | Polish Finish



RMCA006994
Black Diamond Ceramic™ | 8mm
10K Rose Gold Interior, Viking Engraving
Beveled | Polish Finish



RMSA006961
Serinium® | 8mm
10K Yellow Gold Interior, Viking Engraving
Beveled | Polish Finish



RMSA006962
Serinium® | 8mm
10K Rose Gold Interior, Viking Engraving
Beveled | Polish Finish



RMSA006966
Serinium® | 6mm
10K Rose Gold Interior
Domed Grooved Edge | Stone Finish



RMSA006965
Serinium® | 6mm
10K Yellow Gold Interior
Domed Grooved Edge | Stone Finish



RMWA006986
Rugged Tungsten™ | 6mm
10K Rose Gold Interior
Domed | Satin Finish



RMSA006967
Serinium® | 6mm
10K Yellow Gold Interior, Celtic Engraving
Domed | Polish Finish

Craftsman Collection™

RMSA006529
Serinium® | 8mm
Thor & Sandblast Finish

RMCA007213
Black Diamond Ceramic™ | 8mm
Chisel Finish

RMCA006914
Black Diamond Ceramic™ | 8mm
Thor Finish

There is no substitute for the unique qualities of hand craftsmanship. Our Craftsman Collection™ rings are hand carved, shaped and finished by Jewelry Innovations' skilled jewelers, so that no two are exactly alike.

Craftsman carvings include:

- Thor
- Bark
- Chisel
- Moon
- Hammer
- Thicket
- Sentinel

These rings are available in all of our contemporary metals, and with inlays of gold, silver, crushed semi-precious stones, and other materials.



RMSA007417
Serinium® | 8mm
Beveled | Thicket Finish



RMCA006045
Black Diamond Ceramic™ | 8mm
Flat Grooved Edge | Moon Finish



RMCA006126
Black Diamond Ceramic™ | 8mm
2mm 14K Rose Gold Inlay w/ Bark Finish
Domed Grooved Edge | Stone Finish



RMWA007216
Rugged Tungsten™ | 8mm
Flat | Chisel & Sandblast Finish



RMSA007213
Serinium® | 8mm
Flat | Chisel Finish



RMWA001168
Rugged Tungsten™ | 8mm
Beveled | Sentinel Finish



RMSA006331
Serinium® | 6mm
Flat Grooved Edge | Sentinel Finish



RMCA006154
Black Diamond Ceramic™ | 8mm
Flat | Thor Finish



RMSA006366
Serinium® | 8mm
Flat | Thor Finish



RMSA006522
Serinium® | 8mm
Flat Grooved Edge | Thor & Sandblast Finish



RMWA001167
Rugged Tungsten™ | 8mm
Flat | Thor Finish



RMSA002576
Serinium® | 8mm
5mm 14K Yellow Gold Inlay w/ Bark Finish
Flat | Polish Edges



RMCA006025
Black Diamond Ceramic™ | 8mm
Beveled | Bark Finish



RMWA001122
Rugged Tungsten™ | 8mm
Rounded Edge | Bark Finish



RMCA006263
Black Diamond Ceramic™ | 7mm
Rounded Edge | Bark & Rope Edge Finish

ROYAL COPPER™ COLLECTION

RMSA005960
Serinium® | 8mm
5mm Copper Inlay
Flat | Bark Finish



RMCA005900
Black Diamond Ceramic™ | 8mm
5mm Distressed Copper Inlay
Flat | Polish Finish



RMCA006095
Black Diamond Ceramic™ | 8mm
5mm Blue Copper Patina Inlay
Flat | Polish Finish



RMSA002287
Serinium® | 8mm
4mm Distressed Copper Inlay
Domed | Polish Finish



RMSA006367
Serinium® | 8mm
5mm Rustic Copper Patina Inlay
Flat | Polish Finish



RMCA005915
Black Diamond Ceramic™ | 8mm
5mm Copper Inlay w/ Bark Finish
Flat | Polish Edges



RMCA006096
Black Diamond Ceramic™ | 8mm
5mm Orange Copper Patina Inlay
Flat | Polish Finish

The rich warm glow of copper has been valued by human civilizations for thousands of years. Our master jewelers blend high tech materials such as Serinium® and Black Diamond Ceramic™, with copper in its many forms to create styles ranging from classic to the most modern tech designs.

Cultural Heritage™ COLLECTION



RMSA006354
Serinium® | 8mm
Ichthus Engraving
Flat Grooved Edge | Laser Satin Finish

RMSA005977
Serinium® | 8mm
Viking Engraving
Beveled | Polish Finish

Our Cultural Heritage™ Collection celebrates the rich heritage of America. We offer a wide selection of both religious themed and classic ancestral patterns such as the Viking, Aztec, and Dublin Rose. Custom patterns can also be made.

All designs are available in Serinium®, Black Diamond Ceramic™, Rugged Tungsten™, and our other fine metals.



RMSA002720
Serinium® | 8mm
Cross Knot Engraving
Flat | Polish Finish



RMSA006627
Serinium® | 8mm
Norseman Engraving
Flat | Polish Center, Laser Satin Finish



RMSA006983
Serinium® | 8mm
Old Glory Flag Engraving
Flat | Polish Finish



RMSA007327
Serinium® | 8mm
Claddagh Engraving
Beveled | Polish Finish



RMSA006381
Serinium® | 8mm
Trinity Engraving
Flat | Polish Edges



RMSA002079
Serinium® | 8mm
Celtic Knot Engraving
Beveled | Polish Finish

PRECIOUS METAL INLAYS

Our skilled jewelers blend the traditional beauty of gold or sterling silver with the current look of high tech contemporary metal to create our Precious Metal Inlays Collection. These rings are not plated—each ring is inlaid with a solid band of precious metal. The collection includes a wide range of styles and widths in Serinium®, Black Diamond Ceramic™, Rugged Tungsten™, White Ceramic, and Aerospace Grade Titanium™.



RMCA005937
Black Diamond Ceramic™ | 8mm
1mm 14K Rose Gold Inlay
Flat | Satin Finish



RWCA005985
White Ceramic | 8mm
1mm 14K Yellow Gold Inlay
Beveled | Satin Finish

RMSA001783
Serinium® | 6mm
2mm 14K Rose Gold Inlay
Beveled | Satin Finish



RWCA004683
White Ceramic | 8mm
2mm 18K Yellow Gold Inlay
Domed | Polish Finish



RMCA006914
Black Diamond Ceramic™ | 8mm
2mm 14K Yellow Gold Inlay
Flat | Thor Finish



RMCA006270
Black Diamond Ceramic™ | 8mm
1mm 14K Yellow Gold Inlay
Flat | Satin Finish



RMCA006007
Black Diamond Ceramic™ | 8mm
5mm Silver Leaf Inlay
Flat | Polish Finish



RMCA005988
Black Diamond Ceramic™ | 6mm
1mm 14K Rose Gold Inlay
Beveled | Satin Finish



RMCA005989
Black Diamond Ceramic™ | 6mm
1mm 18K Yellow Gold Inlay
Beveled | Satin Finish



RMTA000333
Titanium | 6mm
2mm 14K Yellow Gold Inlay
Domed | Satin Finish



RMSA006136
Serinium® | 6mm
2mm 14K Yellow Gold Inlay
Domed | Satin Finish



RMCA004572
Black Diamond Ceramic™ | 8mm
2mm 18K Yellow Gold Inlay
Flat Grooved Edge | Polish Finish



RMSA002066
Serinium® | 8mm
2mm 14K Rose Gold Inlay
Beveled | Satin Finish



RMCA006126
Black Diamond Ceramic™ | 8mm
2mm 14K Rose Gold Inlay w/ Bark Finish
Domed Grooved Edge | Stone Finish



RMCA006898
Black Diamond Ceramic™ | 8mm
2mm 14K Rose Gold Inlay
Flat | Thor Finish



RMSA005971
Serinium® | 8mm
2mm 14K Rose Gold Inlay
Rounded Edge | Hammer Finish



RMCA006016
Black Diamond Ceramic™ | 8mm
1mm Sterling Silver Inlay
Flat | Satin Finish



RMSA002576
Serinium® | 8mm
5mm 14K Yellow Gold Inlay
Flat | Bark Finish



RMCA006128
Black Diamond Ceramic™ | 8mm
2mm Sterling Silver Inlay
Domed Grooved Edge | Moon Finish

LASER ENGRAVED COLLECTION

Using the most advanced laser technology, we turn your ideas, photos, or artwork into unique and personal jewelry pieces. A passion for sports, or your loved one's heartbeat or fingerprint can be inscribed in both the exterior and interior of a ring.

Choose from Serinium®, Black Diamond Ceramic™, Rugged Tungsten™, or any other material.

RMCA007304
Black Diamond Ceramic™ | 8mm
Mountain Pine Engraving
Flat

RMSA006027
Serinium® | 8mm
Mountain Pine Engraving
Flat



RMCA007423
Black Diamond Ceramic™ | 8mm
Cross Knot Engraving
Flat | Polish Finish



RMSA007400
Serinium® | 8mm
Forest Engraving
Flat | Satin Finish



RMWA001171
Rugged Tungsten™ | 8mm
Viking Engraving
Rounded Edge | Polish Finish



RMCA006036
Black Diamond Ceramic™ | 8mm
Viking Engraving
Beveled | Polish Finish



RMSA006386
Serinium® | 8mm
Mountain Scene Engraving
Domed | Stone Finish



RMSA007079
Serinium® | 8mm
Navajo Rug Engraving
Flat | Laser Satin Finish



RMCA007076
Black Diamond Ceramic™ | 8mm
2mm Turquoise Inlay, Feather Engraving
Beveled | Polish Edges



RMSA002698
Serinium® | 8mm
5mm Copper Inlay, Celtic Knot Engraving
Flat | Polish Finish



RMSA007091
Serinium® | 8mm
1mm Turquoise, 2mm Bourbon Inlay,
Feather Engraving | Flat | Polish Finish



RMSA006353
Serinium® | 8mm
Alchemist Engraving
Beveled | Laser Satin Finish

HUNDREDS OF DESIGNS AVAILABLE



RMSA006920
Serinium® | 8mm
Snowflake Engraving
Dome | Polish Finish



RMCA006627
Black Diamond Ceramic™ | 8mm
Norseman Engraving
Flat | Polish Center, Laser Satin Finish



RMSA006950
Serinium® | 8mm
Latigo Floral Engraving
Flat Grooved Edge | Polish & Milgrain Finish



RMSA002467
Serinium® | 8mm
Celtic Thorn Engraving
Flat Grooved Edge | Polish Finish



RMCA006976
Black Diamond Ceramic™ | 8mm
Old Glory Flag Engraving
Flat | Polish Finish



RMSA006354
Serinium® | 8mm
Ichthus Engraving
Flat Grooved Edge | Laser Satin Finish



RMWA007419
Rugged Tungsten™ | 8mm
Abstract Engraving
Flat | Polish Finish



RMSA006426
Serinium® | 8mm
Pine Trees Engraving
Flat | Polish Finish



RMSA007420
Serinium® | 8mm
Greek Key Engraving
Flat Grooved Edge | Satin Finish



RMSA007113
Serinium® | 8mm
Pine Trees Engraving, 2mm Turquoise Inlay
Flat | Half Stone Finish



RMSA002720
Serinium® | 8mm
Cross Knot Engraving
Flat | Polish Finish



RMSA002451
Serinium® | 8mm
Gearhead Engraving
Flat Grooved Edge | Polish Finish



RMCA007040
Black Diamond Ceramic™ | 8mm
4mm Laser Satin Center
Flat | Polish Finish



RMSA002279
Serinium® | 8mm
Camouflage Engraving
Domed



RMCA007079
Black Diamond Ceramic™ | 8mm
Navajo Rug Engraving
Flat | Laser Satin Finish



RMCA006102
Black Diamond Ceramic™ | 8mm
Weave Engraving
Flat Grooved Edge | Satin Finish



RMSA002248
Serinium® | 8mm
Celtic Knot Engraving
Domed | Milgrain Finish



RMSA002898
Serinium® | 8mm
Tectonic Engraving
Flat | Laser Satin Finish



RMSA006374
Serinium® | 8mm
Circuit Engraving
Flat | Laser Satin Finish



RMSA006949
Serinium® | 8mm
Latigo Floral Engraving
Flat | Rope Edge Finish



RMCA007327
Black Diamond Ceramic™ | 8mm
Claddagh Engraving
Beveled | Polish Finish

“

I just received our custom jobs. The flush mount and channel set came out perfectly. I have never had such a good working relationship as I do with Jewelry Innovations. They're honest, give real deadlines for the work to be done, and get the instructions right. THANK YOU SO MUCH!

Lida | Cavalieri Jewelers



RMSA002411
Serinium® | 8mm
Soccer Ball Engraving
Dome | Polish Finish



RMSA006168
Serinium® | 8mm
Basketball Engraving
Dome



RMSA005904
Serinium® | 8mm
American Flag Engraving
Domed



RMSA007190
Serinium® | 8mm
Oil Field Scene Engraving
Flat | Stone Finish



RMSA002749
Serinium® | 8mm
Elk Head Engraving
Flat | Polish Finish



RMSA002304
Serinium® | 8mm
Deer Head Engraving
Domed | Polish Finish



RMSA002767
Serinium® | 8mm
Hunter Engraving
Flat | Polish Finish



RMSA002897
Serinium® | 8mm
Sunrise Fisherman Engraving
Flat

Carbon FIBER™

These revolutionary materials show off their style in our Carbon Fiber Inlay Collection. We offer a wide range of combinations and weaves that include the addition of colored Kevlar hybrids in all of our jewelry metals, including Serinium®, Black Diamond Ceramic™, and Rugged Tungsten™.

The perfect choice for a stunning ring, high tech from start to finish.



RMCA002071
Serinium® | 8mm
4mm Black Carbon Fiber Inlay
Beveled | Polish Finish



RMSA006208
Serinium® | 8mm
5mm Black & Blue Carbon Fiber Inlay
Flat | Polish Finish



RMSA006212
Serinium® | 8mm
5mm Black & Red Carbon Fiber Inlay
Flat | Polish Finish



RMCA004597
Black Diamond Ceramic™ | 8mm
5mm Bright Blue Carbon Fiber Inlay
Flat | Polish Finish



RMCA006019
Black Diamond Ceramic™ | 8mm
5mm Black & Green Carbon Fiber Inlay
Flat | Polish Finish



RMCA006011
Black Diamond Ceramic™ | 8mm
5mm Black & Blue Carbon Fiber Inlay
Flat | Polish Finish



RMCA006027
Black Diamond Ceramic™ | 8mm
5mm Black & Red Carbon Fiber Inlay
Flat | Polish Finish



RMCA004004
Black Diamond Ceramic™ | 8mm
5mm Deep Red Carbon Fiber Inlay
Flat | Polish Finish

EXOTIC hardwood

The warmth of genuine wood inlay gleams from our Exotic Hardwood Collection bands, inlaid by skilled artisans and sealed with a proprietary coating for lasting beauty.

Available in a wide variety of widths, finishes, and all of our fine jewelry metals including Serinium®, Black Diamond Ceramic™, and Rugged Tungsten™.



RMSA002696
Serinium® | 8mm
5mm Burl Wood Inlay
Flat | Polish Finish



RMSA002308
Serinium® | 8mm
5mm Desert Ironwood Inlay
Domed | Polish Finish



RMSA002683
Serinium® | 8mm
5mm Bocote Wood Inlay
Flat | Polish Finish



RMSA002926
Serinium® | 8mm
5mm Zebrawood Inlay
Flat | Polish Finish



RMSA002772
Serinium® | 8mm
5mm Kingwood Inlay
Flat | Polish Finish

DIAM NDS

Diamonds. Their brilliant fire adds an unmistakable richness to even the most simple band. Choose from any piece in our Diamond Collection.



RMSA002076
Serinium® | 8mm
.06 SI1-G Diamond, Laser Satin Center
Beveled | Polish Finish



RMSA002221
Serinium® | 8mm
.06 SI1-G Diamond, Laser Satin Center
Domed | Polish Finish



RMCA004447
Black Diamond Ceramic™ | 8mm
.06 SI1-G Diamond
Domed | Satin Finish



RMCA004449
Black Diamond Ceramic™ | 8mm
.06 SI1-G Diamond
Beveled | Satin Finish



RMSA002056
Serinium® | 8mm
.06 SI1-G Diamond
Beveled | Satin Finish



RMSA002839
Serinium® | 8mm
.06 SI1-G Diamond, Grid Engraving
Beveled | Stone Finish

RMSA002940
Serinium® | 8mm
.06 SI1-G Diamond
Rounded Edge | Stone Finish

CUSTOMIZATION

Our graphic artists and jewelers can create custom rings to suit anyone's passion. From custom laser engravings, such as fingerprints and heartbeats, to bespoke inlays of branded whiskey barrel wood or vintage baseball bat wood, the range of possibilities is almost endless.

Don't hesitate to call us if the ring you are imagining is not in our catalog. We can accommodate most custom requests.



RMSA002752
Serinium® | 8mm
Fingerprint Engraving
Flat | Polish Finish



RMSA006098
Serinium® | 8mm
Fingerprint Inside Engraving
Domed Grooved Edge | Polish Finish



RMSA005911
Serinium® | 8mm
EKG Heart Beat Engraving
Beveled | Laser Satin Finish



(CUSTOM)
Rugged Tungsten™ | 8mm
Custom Class Ring Engraving
Flat | Polish Finish



RMSA007446
Serinium® | 8mm
Golden Gate Bridge Engraving
Flat | Satin Finish

FIRST RESPONDER

Our First Responder Collection is a great way to show support for our brave police force, firefighters, paramedics, and emergency medical technicians. Available in Serinium®, Black Diamond Ceramic™, and Rugged Tungsten™.

Jewelry Innovations thanks our first responders for keeping us safe.



RMCA004498
Black Diamond Ceramic™ | 8mm
2mm Red Enamel Inlay
Beveled | Polish Finish



RMSA006061
Serinium® | 8mm
2mm Blue Enamel Inlay
Beveled | Polish Finish



RMCA004004
Black Diamond Ceramic™ | 8mm
5mm Deep Red Carbon Fiber Inlay
Flat | Polish Finish



RMSA006208
Serinium® | 8mm
5mm Black & Blue Carbon Fiber Inlay
Flat | Polish Finish



RMLA001018
TruBand Silicone™ | 8mm
2mm Red Center
Domed | Black



RMLA001017
TruBand Silicone™ | 8mm
2mm Blue Center
Domed | Black



RMCA004497
Black Diamond Ceramic™ | 8mm
2mm Blue Enamel Inlay
Beveled | Polish Finish

CAVIO COLLECTION

Wear your love for the outdoors with a camouflage band. We offer both laser engraved and inlay styles. Choose one of our original camo designs or opt for a genuine licensed Realtree® camo inlay. For added safety in the field, see our TruBand™ Silicone ring collection on page 46.



RMSA002279
Serinium® | 8mm
Camouflage Engraving
Domed



RMSA002877
Serinium® | 8mm
5mm Realtree Advantage Timber®
Flat | Polish Finish



RMCA005918
Black Diamond Ceramic™ | 8mm
5mm Realtree MAX-5®
Flat | Polish Finish



RMSA002872
Serinium® | 8mm
5mm Realtree MAX-5®
Flat | Polish Finish

WE OFFER ALL LICENSED REALTREE® CAMO INLAYS

Visit jewelryinnovations.com for more options.



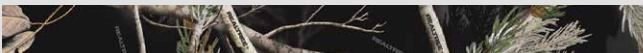
MAX-4®



AP Green®



MAX-5®



AP Black®



XTRA Green®



AP Snow®



Advantage Timber®



AP Blaze®



RMLA001022
TruBand Silicone™ | 8mm
Camouflage Pattern
Domed



SERINIUM®

The Precious Contemporary Metal®

Patented for its unique beauty, hardness, and safety, Serinium® is truly the Precious Contemporary Metal®. Cast at high pressure and temperature, Serinium is bright white, ultra-hard, and hypoallergenic. Serinium will not crush onto a finger if compressed, and can easily be removed in an emergency with simple vice grip pliers or a ring cracker. It is the finest of all contemporary jewelry metals and is only available from Jewelry Innovations.

All Serinium rings are available in 6mm and 8mm widths, whole and half sizes 5 – 16, with additional sizes* available in some styles. We also have 10mm width in certain styles.

**See additional sizes on page 52.*

Serinium® is a registered trademark for a branded fine jewelry metal.



RMSA002071
Serinium® | 8mm
4mm Black Carbon Fiber Inlay
Beveled | Polish Finish



RMSA006027
Serinium® | 8mm
Mountain Pine Engraving
Flat



RMSA005977
Serinium® | 8mm
Viking Engraving
Beveled | Polish Finish



RMSA002464
Serinium® | 8mm
Flat Grooved Edge | Sandblast Finish



RMSA006529
Serinium® | 8mm
Flat | Thor & Sandblast Finish



RMSA002131
Serinium® | 8mm
Beveled | Stone Finish



RMSA006577
Serinium® | 8mm
3mm Bourbon Inlay
Flat | Bark Finish



RMSA005960
Serinium® | 8mm
5mm Copper Inlay w/ Bark Finish
Flat | Polish Edges



RMSA001894
Serinium® | 6mm
Domed | Satin Finish



RMSA001802
Serinium® | 6mm
Beveled | Satin Finish



RMSA006530
Serinium® | 6mm
Flat Grooved Edge | Moon & Sandblast Finish



RMSA002129
Serinium® | 8mm
Beveled | Satin Finish



RMSA002254
Serinium® | 8mm
4mm Antler Inlay
Domed | Polish Finish



RMSA006722
Serinium® | 8mm
1mm Antler, 2mm Bourbon Inlay
Flat | Polish Finish



RMSA006627
Serinium® | 8mm
Norseman Engraving
Flat | Polish Center, Laser Satin Finish



RMSA002404
Serinium® | 8mm
Domed | Satin Finish



RMSA002401
Serinium® | 8mm
Domed | Sandblast Finish



RMSA002466
Serinium® | 8mm
Flat Grooved Edge | Satin Finish



RMSA006386
Serinium® | 8mm
Mountain Line Engraving
Domed | Stone Finish



RMSA007090
Serinium® | 8mm
2mm Malachite Inlay
Beveled | Grain Finish



RMSA002221
Serinium® | 8mm
.06 SI1-G Diamond, Laser Satin Center
Domed | Polish Finish



RMSA002205
Serinium® | 8mm
4mm Black Ceramic Inlay
Domed | Hammer Finish



“

Serinium...looks amazing and has a bright white color. It is ideal for both men and women and is one of the most amazing inventions in the jewelry world that has occurred in the last couple of years. ...No metal is perfect, but Serinium is close to perfection when it comes to wedding bands.

Jennifer Shih | My Bridal Ring Blog



RMSA006332
Serinium® | 8mm
Flat Grooved Edge | Sentinel Finish



RMSA002963
Serinium® | 8mm
Rounded Edge | Bark Finish



RMSA007216
Serinium® | 8mm
Flat | Chisel & Sandblast Finish



RMSA002057
Serinium® | 8mm
Beveled | Polish Finish



RMSA006949
Serinium® | 8mm
Latigo Floral Engraving
Flat | Rope Edge Finish



RMSA002216
Serinium® | 8mm
4mm Black Ceramic Inlay
Domed | Stone Finish



RMSA007088
Serinium® | 8mm
2mm Lapis Inlay
Beveled | Grain Finish



RMSA006426
Serinium® | 8mm
Pine Trees Engraving
Flat | Polish Finish



RMSA002576
Serinium® | 8mm
5mm 14K Yellow Gold Inlay w/ Bark Finish
Flat | Polish Edges



RMSA007103
Serinium® | 8mm
3mm Opal Inlay, Feather Engraving
Flat | Polish Finish



RMSA006583
Serinium® | 8mm
1mm Turquoise Inlay, 2mm Bourbon
Flat | Polish Finish



RMSA002986
Serinium® | 8mm
Rounded Edge | Bark & Rope Edge Finish



RMSA002959
Serinium® | 8mm
Rounded Edge | Stone Finish



RMSA002469
Serinium® | 8mm
Flat Grooved Edge | Stone Finish



RMSA002179
Serinium® | 8mm
Domed | Polish Finish



RMSA002223
Serinium® | 8mm
4mm Laser Satin Center
Domed | Polish Finish



RMSA007188
Serinium® | 8mm
1mm Turquoise, 2mm Antler Inlay
Flat | Polish Finish



RMSA006828
Serinium® | 10mm
Camouflage Engraving
Domed



RMSA006842
Serinium® | 10mm
Flat | Thor Finish



RMSA006331
Serinium® | 6mm
Flat Grooved Edge | Sentinel Finish



RMSA006136
Serinium® | 6mm
2mm 14K Yellow Gold Inlay
Domed | Satin Finish



RMSA001891
Serinium® | 6mm
Domed | Sandblast Finish



RMSA001875
Serinium® | 6mm
Domed Grooved Edge | Satin Finish



RMSA001920
Serinium® | 6mm
Flat Grooved Edge | Satin Finish



RMSA006067
Serinium® | 4mm
Domed | Polish Finish



RMSA001821
Serinium® | 6mm
Domed | Polish Finish



RMSA001804
Serinium® | 6mm
Beveled | Stone Finish



RMSA001925
Serinium® | 6mm
Flat Grooved Edge | Stone Finish

BLACK DIAMOND CERAMIC™

Black Diamond Ceramic™ is among the hardest materials in the world. Elegant and sophisticated, it is only half the weight of tungsten carbide and its black color is solid throughout, as opposed to a coating that can scratch and wear.

Perfect for someone who wants the classic look of black in a contemporary ring.

Offered in whole and half sizes 5–16*, from 6mm to 8mm widths.

**Some styles are available in smaller sizes (see page 52).*



RMCA004517
Black Diamond Ceramic™ | 8mm
Beveled | Satin Finish



RMCA006154
Black Diamond Ceramic™ | 8mm
Flat | Thor Finish



RMCA006036
Black Diamond Ceramic™ | 8mm
Viking Engraving
Beveled | Polish Finish



RMCA004523
Black Diamond Ceramic™ | 8mm
Beveled | Polish Finish



RMCA004652
Black Diamond Ceramic™ | 8mm
Flat | Polish Finish



RMCA006582
Black Diamond Ceramic™ | 8mm
2mm Bourbon Inlay
Beveled | Grain Finish



RMCA005937
Black Diamond Ceramic™ | 8mm
1mm 14K Rose Gold Inlay
Flat | Satin Finish



RMCA005960
Black Diamond Ceramic™ | 8mm
Beveled | Stone Finish



RMCA006906
Black Diamond Ceramic™ | 8mm
Two 2mm Bourbon Inlays
Domed | Polish Finish



RMCA006025
Black Diamond Ceramic™ | 8mm
Beveled | Bark Finish



RMCA006086
Black Diamond Ceramic™ | 8mm
Domed | Sentinel Finish



RMCA007375
Black Diamond Ceramic™ | 8mm
2mm Coral Inlay
Flat | Stone Finish



RMCA007188
Black Diamond Ceramic™ | 8mm
1mm Turquoise, 2mm Antler Inlay
Flat | Polish Finish



RMCA007400
Black Diamond Ceramic™ | 8mm
Forest Engraving
Flat | Satin Finish



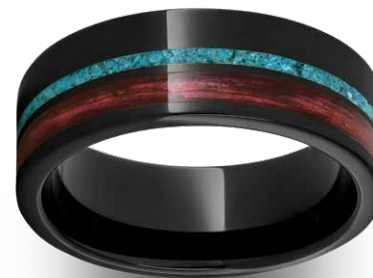
RMCA007065
Black Diamond Ceramic™ | 8mm
Ichthus Engraving
Flat Grooved Edge | Satin Finish



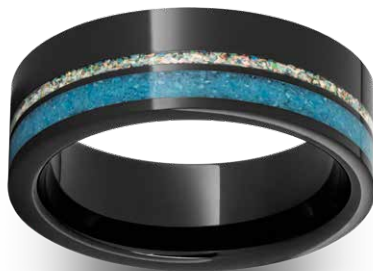
RMCA006105
Black Diamond Ceramic™ | 8mm
4mm Antler Inlay
Domed | Polish Finish



RMCA006961
Black Diamond Ceramic™ | 8mm
Latigo Floral Engraving
Flat Grooved Edge | Polish Finish



RMCA006584
Black Diamond Ceramic™ | 8mm
1mm Turquoise, 2mm Cabernet Inlay
Flat | Polish Finish



RMCA004699
Black Diamond Ceramic™ | 8mm
1mm Opal, 2mm Turquoise Inlay
Flat | Polish Finish



RMCA006164
Black Diamond Ceramic™ | 8mm
Three .5mm Grooves
Beveled | Stone Finish



RMCA006914
Black Diamond Ceramic™ | 8mm
2mm 14K Yellow Gold Inlay
Flat | Thor Finish



RMCA005943
Black Diamond Ceramic™ | 8mm
Beveled | Sandblast Finish



RMCA005909
Black Diamond Ceramic™ | 8mm
Domed | Military Sandblast Finish



RMCA004578
Black Diamond Ceramic™ | 8mm
Flat Grooved Edge | Satin Finish



RMCA006045
Black Diamond Ceramic™ | 8mm
Flat Grooved Edge | Moon Finish



RMCA004466
Black Diamond Ceramic™ | 6mm
Domed | Sandblast Finish



RMCA006263
Black Diamond Ceramic™ | 7mm
Rounded Edge | Bark & Rope Edge Finish



RMCA005924
Black Diamond Ceramic™ | 7mm
Rounded Edge | Stone Finish



RMCA006152
Black Diamond Ceramic™ | 6mm
Domed Grooved Edge | Stone Finish



RMCA005944
Black Diamond Ceramic™ | 6mm
Domed | Stone Finish



RMCA006727
Black Diamond Ceramic™ | 6mm
Beveled | Stone Finish



RMCA004469
Black Diamond Ceramic™ | 6mm
Domed | Satin Finish



RMCA004455
Black Diamond Ceramic™ | 6mm
Beveled | Satin Finish



RMCA004470
Black Diamond Ceramic™ | 6mm
Domed | Polish Finish

RUGGED Tungsten™

Rugged Tungsten™ is America's premier collection of tungsten carbide jewelry.

Precision crafted from the highest quality alloy, Rugged Tungsten™ rings are beautiful, tough, and covered by our industry-leading warranty and customer support.

Many of the ring styles you love in our other metals are now available in Rugged Tungsten™, including custom engravings. Available in whole and half sizes 5-16, 6mm and 8mm widths.



RMWA001068
Rugged Tungsten™ | 8mm
Flat Grooved Edge | Sandblast Finish



RMWA007086
Rugged Tungsten™ | 8mm
3mm Lapis Inlay
Flat | Moon Finish



RMWA001098
Rugged Tungsten™ | 8mm
4mm Black Ceramic Inlay w/ Bark Finish
Flat | Stone Finish



RMWA001167
Rugged Tungsten™ | 8mm
Flat | Thor Finish



RMWA007085
Rugged Tungsten™ | 8mm
3mm Antler Inlay
Flat | Bark Finish



RMWA001171
Rugged Tungsten™ | 8mm
Viking Engraving
Rounded Edge | Polish Finish



RMWA006772
Rugged Tungsten™ | 8mm
5mm Bourbon Inlay
Flat | Stone Finish



RMWA001038
Rugged Tungsten™ | 8mm
Beveled | Satin Finish



RMWA006577
Rugged Tungsten™ | 8mm
3mm Bourbon Inlay
Flat | Bark Finish



RMWA001169
Rugged Tungsten™ | 8mm
V-Groove Engravings
Domed | Polish Center, Stone Edges



RMWA001255
Rugged Tungsten™ | 8mm
Flat Grooved Edge | Moon & Sandblast



RMWA001055
Rugged Tungsten™ | 8mm
Domed | Sandblast Finish



RMWA001083
Rugged Tungsten™ | 8mm
Rounded Edge | Stone Finish



RMWA001077
Rugged Tungsten™ | 8mm
Flat | Sandblast Finish



RMWA007369
Rugged Tungsten™ | 8mm
2mm Opal Inlay
Flat | Half Stone Finish



RMWA001052
Rugged Tungsten™ | 8mm
Domed | Satin Finish



RMWA006627
Rugged Tungsten™ | 8mm
Norseman Engraving
Flat | Polish Center, Laser Satin Finish



RMWA001168
Rugged Tungsten™ | 8mm
Beveled | Sentinel Finish



RMWA001195
Rugged Tungsten™ | 8mm Flat
4mm Brown Ceramic Inlay
Flat | Hammer Finish



RMWA007108
Rugged Tungsten™ | 8mm
2mm Lapis Inlay
Flat | Half Stone Finish



RMWA001096
Rugged Tungsten™ | 8mm
4mm Black Ceramic Inlay
Flat | Stone Finish



RMWA001065
Rugged Tungsten™ | 8mm
Flat Grooved Edge | Satin Finish



RMWA001239
Rugged Tungsten™ | 8mm
Flat Grooved Edge | Thor & Sandblast Finish



RMWA001122
Rugged Tungsten™ | 8mm
Rounded Edge | Bark Finish



RMWA001039
Rugged Tungsten™ | 8mm
Beveled | Stone Finish



RMWA001037
Rugged Tungsten™ | 6mm
Beveled | Sandblast Finish



RMWA001051
Rugged Tungsten™ | 6mm
Domed | Sandblast Finish



RMWA001115
Rugged Tungsten™ | 6mm
2mm Laser Satin Center
Domed | Polish Finish



RMWA001060
Rugged Tungsten™ | 6mm
Flat Grooved Edge | Satin Finish



RMWA001034
Rugged Tungsten™ | 6mm
Beveled | Satin Finish



RMWA001048
Rugged Tungsten™ | 6mm
Domed | Satin Finish



RMWA001064
Rugged Tungsten™ | 6mm
Flat Grooved Edge | Sentinel Finish



RMWA001035
Rugged Tungsten™ | 6mm
Beveled | Stone Finish



RMWA001119
Rugged Tungsten™ | 6mm
Rounded Edge | Stone Finish

TrūBand Silicone™

Flexible and comfortable for an active lifestyle, TrūBand rings are for everyday wear or in place of a wedding band during strenuous activities, to protect the wedding band from being damaged and the finger from being injured.

Offered in whole sizes from 5–16 except dual colored rings are 7-16.



RMLA001013
TrūBand Silicone™ | 8mm
Domed | Black



RMLA001014
TrūBand Silicone™ | 8mm
Domed | Red



RMLA001015
TrūBand Silicone™ | 8mm
Domed | Navy



RMLA001016
TrūBand Silicone™ | 8mm
Domed | Dark Gray



RMLA001017
TrüBand Silicone™ | 8mm
Domed | Black w/ Blue Center
ring sizes available: 7-16



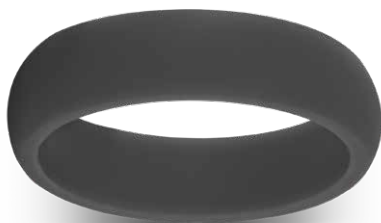
RMLA001018
TrüBand Silicone™ | 8mm
Domed | Black w/ Red Center
ring sizes available: 7-16



RMLA001019
TrüBand Silicone™ | 8mm
Domed | Dark Red



RMLA001022
TrüBand Silicone™ | 8mm
Domed | Camouflage



RMLA001020
TrüBand Silicone™ | 6mm
Domed | Dark Gray



RMLA001021
TrüBand Silicone™ | 6mm
Domed | Black



RMLA001026
TrüBand Silicone™ | 6mm
Domed | Navy



RMLA001027
TrüBand Silicone™ | 6mm
Domed | Pink



RMLA001028
TrüBand Silicone™ | 6mm
Domed | Pearl White



RMLA001029
TrüBand Silicone™ | 3mm
Spiral | Pink



RMLA001030
TrüBand Silicone™ | 2.5mm
Diamond Faceted | Turquoise

aerospace grade™ TITANIUM

Strong, flexible, and light weight, Titanium is the material of choice for many contemporary rings. But not all Titanium is created equal. Our Aerospace Grade Titanium is the highest quality Titanium available in the jewelry industry at 90% pure, the same quality standard required by the aerospace industry for the most demanding applications.

For the value conscious customer, many of our rings are also available in our Quality Standard Titanium™.

Aerospace Grade Titanium is offered in sizes 2–20, with 2mm–12mm widths. Quality Standard Titanium is offered in sizes 8–12 and widths shown.



RMTA005923
Titanium | 7mm
Beveled | Stone Finish



RMTA001106
Titanium | 8mm
4mm Desert Ironwood Inlay
Domed | Polish Finish



RMTA005933
Titanium | 7mm
Beveled | Satin Finish



RMTA000571
Titanium | 6mm
Flat Grooved Edge | Stone Finish



RMTA000493
Titanium | 6mm
(3) .03R Diamonds, 2mm Sterling Silver Inlay
Flat | Satin Finish



RMTA005968
Titanium | 6mm
Beveled | Satin Finish



RMTA000333
Titanium | 6mm
2mm 14K Yellow Gold Inlay
Domed | Satin Finish



RMTA000242
Titanium | 6mm
Beveled | Satin Finish



RMTA000569
Titanium | 6mm
Flat Grooved Edge | Satin Finish



RMTA005916
Titanium | 6mm
Domed | Satin Finish

QUALITY STANDARD TITANIUM™

Available in sizes 8–12, & widths shown.



RMTA000650
Titanium | 7mm
4mm Carbon Fiber Inlay
Beveled | Polish Finish



RMTA000825
Titanium | 7mm
(2) Steel Rope Inlays
Flat | Satin Finish



RMTA000258
Titanium | 6mm
(2) Sterling Silver Inlays
Beveled | Satin Finish



RMTA000427
Titanium | 6mm
Domed Grooved Edge | Satin Finish

KNOW YOUR CONTEMPORARY FINE JEWELRY METALS

A Brief Description of Metals and Their Properties

Serinium®



Serinium®, the Precious Contemporary Metal®, is a trademark for the newest and most beautiful of the contemporary fine jewelry metals. This high-tech metal is patented by and exclusive to Jewelry Innovations®.

- **DURABILITY:** Many times harder than other jewelry metals, second only to tungsten carbide, which is far more brittle
- Will not chip or shatter if dropped on a hard surface, unlike tungsten carbide
- Ultra tough and scratch resistant
- **COLOR:** Beautiful bright white, similar to white gold and platinum
- Will not tarnish, oxidize, or change color
- **SAFETY:** Will not crush onto a finger, and is easily and safely removed in emergencies by applying pressure with hand held vise grips
- During removal, breaks off cleanly in 2-3 pieces with no sharp edges
- Hypoallergenic

Black Diamond Ceramic™



Black Diamond Ceramic™ is a brand of high-tech ceramic compound that is extremely hard and light weight, resulting in a beautiful and enduring ring.

- **DURABILITY:** Extremely hard and scratch resistant (rated a 9 on Mohs hardness scale)
- Elegant lightweight feel, only half the weight of tungsten carbide
- **COLOR:** Can be made in many colors including black, white, and bright colors such as pink
- All colors are solid throughout, eliminating the effects of wear even if scratched or worn
- **SAFETY:** Can be removed with vice grip pliers or a ring cracker in an emergency
- Will not crush onto a finger during impact or injury
- Hypoallergenic and non-conductive

Did you know that the most popular fine jewelry metals for men's rings are not gold, silver, or platinum? With so many options available today, here's a breakdown to help you understand which metal is best for you.

Rugged Tungsten™



The original contemporary jewelry metal, tungsten carbide is the hardest of contemporary metals, but it is brittle and can chip or crack if dropped on a hard surface. Rugged Tungsten™ is an exclusive, high-quality brand of tungsten carbide jewelry alloy uniquely formulated to resist breakage and oxidation.

- **DURABILITY:** The hardest of all contemporary metals (rated a 9 on Mohs hardness scale)
- Subject to chipping and breakage if dropped
- Heavy, luxurious weighted feel
- Can be carved and engraved with a laser, but too hard to cut with easily available tools
- **COLOR:** Attractive gun-metal gray color, tends to oxidize and darken somewhat over time
- **SAFETY:** Too hard to cut, must be broken off with a ring cracker or vice grip pliers
- Can shatter into sharp pieces that may cause further injury
- Will not crush onto a finger during impact or injury, but may shatter

Aerospace Grade Titanium™



Aerospace Grade Titanium and its value priced alternative, Quality Standard Titanium™ are branded alloys of titanium which is an extremely tough, flexible, light weight, and durable metal used in aerospace and industrial applications.

- **DURABILITY:** Not as hard as Serinium or tungsten carbide, but harder than gold
- Higher grades of titanium such as Aerospace Grade Titanium™ are harder to work with, but create stronger, harder, and more durable jewelry
- **COLOR:** Light gray in color
- **SAFETY:** Difficult to remove in an emergency, as it will crush onto a finger and must be cut in at least two places with diamond edged tools, generating significant levels of heat in order to be removed
- May cause further injury during emergency removal
- Hypoallergenic

RING STYLES & SIZING

All of our metals and finishes are available in the shapes below.



All rings are available in whole and half sizes 5 – 16, with the following additional sizes:

SERINIUM®

8mm Flat.....4.5 – 16

BLACK DIAMOND CERAMIC™

6mm Flat.....4.5 – 16	8mm Beveled.....4.0 – 16
6mm Domed.....4.5 – 16	6mm Flat Grooved Edge.....4.5 – 16
8mm Domed.....4.5 – 16	8mm Flat Grooved Edge.....4.5 – 16
6mm Beveled.....6.0 – 16	6mm Domed Grooved Edge ...4.5 – 16

How to size your customer’s finger:

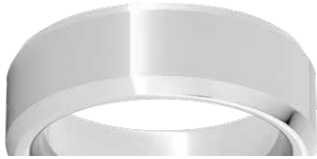
Looking for the perfect fit? Please use the narrow ring sizers (approximately 2mm wide) when sizing your customer. Jewelry Innovations rings all have rounded Comfort Fit inside, so a narrow ring sizer will give a more accurate size even when sizing for our 8mm and 10mm width rings.

If you prefer measuring a customer’s existing ring, please size the ring on the mandrel with the center of the ring to get a more accurate fit.

Still not certain? Give us a call and let us help you get the perfect fit.

RING FINISHES

Most finishes are available on any style ring. Pictured are examples of finishes on Serinium® bands with the associated style numbers. Some finishes can be combined for a unique look.



POLISH
shown on beveled
(RMSA002057)



SATIN
shown on beveled
(RMSA002129)



CROSS SATIN
shown on beveled
(RMSA005933)



LASER SATIN
shown on flat
(RMSA002650)



SENTINEL
shown on flat grooved edge
(RMSA006332)



MILGRAIN EDGE
shown on flat grooved edge
(RMSA002455)



ROPE EDGE
shown on rounded edge
(RMSA005991)



GRAIN
shown on flat grooved edge
(RMSA005944)



SANDBLAST
shown on beveled
(RMSA002126)



STONE
shown on beveled
(RMSA002131)



MOON
shown on flat grooved edge
(RMSA002461)



HAMMER
shown on rounded edge
(RMSA002977)



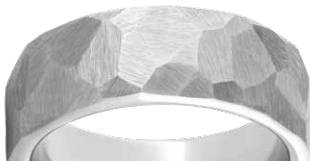
THOR
shown on flat
(RMSA006366)



BARK
shown on rounded edge
(RMSA002963)



BARK 1
shown on flat grooved edge
(RMSA002438)



CHISEL
shown on flat
(RMSA007213)



THICKET
shown on beveled
(RMSA007417)



NOTCHED EDGE
shown with rye whiskey inlay
(RMSA006928)



SCORED EDGE
shown with bourbon inlay
(RMSA006875)

WE STAND BEHIND OUR JEWELRY

Our industry leading warranty and customer service are our commitment to you.

- Free service, refinishing, and repair on all rings, including size exchanges, for one year from the date of store sale.
- Free lifetime replacement of any contemporary metal ring removed in a medical emergency.
- Free lifetime ring replacement for breakage of Rugged Tungsten™ and Black Diamond Ceramic™ rings.
- After one year, only a single fee of \$35 for service requests including repair and replacement of inlays, refinishing, and size exchanges.
- We provide a copy of our detailed warranty with each ring sold.



jewelryinnovations.com

Sign in or create an account at
jewelryinnovations.com/my-account
to order online.



800-872-6840

Our friendly staff is ready
to assist you.



info@jewelryinnovations.com

Email us your order and we'll
respond right away.

Jewelry Innovations supports independent jewelry retailers and industry organizations. We never sell directly to the public, and are proud members of:

- IJO (Independent Jewelers Organization)
- Leading Jewelers Guild
- RJO (Retail Jewelers Organization)
- CBG (Continent Buying Group)



A+
RATING

Jewelry Innovations has been accredited with the Better Business Bureau since **2002**.

Just as the name implies, Jewelry Innovations is constantly bringing out new styles, staying ahead of the wedding band trends. The quality is consistent and sizing is spot on. All of these are well and good but would mean little without customer service. Many companies want to be “your partner”, while this is true of Jewelry Innovations, they also become your friend. You will bring them in your store for the margin, and you’ll keep them for the customer service.

Bill Archinal | Barnes Jewelry, 3.24.2023

We love working with Jewelry Innovations! They have good product, get it to us fast, and right the first time. I really feel like they have our back.

Michael F. | Occasions Fine Jewelers

Vendor shout out to Jewelry Innovations. They have the best staff, the most patience, (customer decides to lose 26 pounds and 2 weeks before wedding needs his 14.5 exchanged for a 13.5), and best exchange policy, (one year, unlimited, size exchange FREE with a \$35, shipping included, changes after one year.) Thank you!

Becky Beck Ryan | Becky Beck Jewelry Store, 8.14.2020

Highly recommend. I have been a customer for over 9 years.

Josh Chapman | Chapman Jewelry and Repair, 8.27.2019

6MM STYLES





jewelryinnovations.com

800-872-6840

info@jewelryinnovations.com



©Jewelry Innovations LLC 2023. All Rights Reserved. Jewelry Innovations®, Serinium® “The Precious Contemporary Metal®”, Rugged Tungsten™, Black Diamond Ceramic™, Aerospace Grade Titanium™, Barrel Aged™, National Pastime™, and Western Heritage™ collections and their logos are either registered trademarks or trademarks of Jewelry Innovations LLC in the United States and/or other countries.

